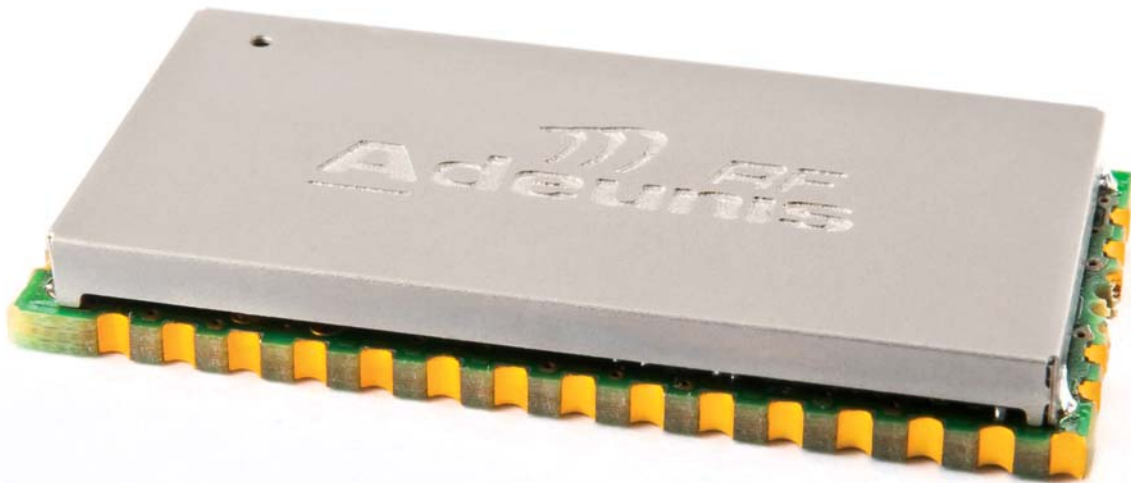


- ▶ Flexible
- ▶ Modular
- ▶ Powerful
- ▶ Robust
- ▶ Certified

SHORT FORM CATALOGUE



RF Modules

TWIMO RF Modules

863 / 870MHz

► 6000m range - up to 500mW

HP868



Radiated RF Power: 27dBm
Sensitivity: -110dBm
RF data rate: 10 / 38.4 / 57.6 kbps
Features : TDMA, Addressed, Transparent modes....
API version (programmable), RTU version (Radio gateway)
Power supply: 3 to 3.6V
Power consumption: 600mA (TX) -22mA (RX) - 25µA (Stby)
Operating temperature: -20 / +70°C
Dimensions (mm): 32 x 16 x 3
Standards : EN300-220 v2010

Versions	Part Nb
RTU	ARF7581AA
API	ARF7736AA

863 / 870MHz

► 1000m range - up to 50mW

MP868



Radiated RF Power: 17dBm
Sensitivity: -110dBm
RF data rate: 10 / 38.4 / 57.6 kbps
Features : TDMA, Addressed, Transparent modes....
API version (programmable), RTU version (Radio gateway)
Power supply: 3 to 3.6V
Power consumption: 100mA (TX) -22mA (RX) - 25µA (Stby)
Operating temperature: -20 / +70°C
Dimensions (mm): 32 x 16 x 3
Standards : EN300-220 v2010

Versions	Part Nb
RTU	ARF7580AA
API	ARF7735AA

Wireless M-Bus Modules

868 / 870MHz

► 1000m range - 20mW -117dBm

RTU



Radiated RF Power: 14dBm
Sensitivity: -110dBm (T or S modes) / -117dBm (R mode)
RF data rate: 4.5 kbps (R mode) / 32 kbps (S mode) / 100 kbps (T mode)
Fully certified M-Bus stack with applicative firmware: M-Bus modes: R / S / T
Power supply: 2 to 3.6V
Power consumption: 35mA (TX) - 25mA (RX) - <0.6µA (stby)
Operating temperature: -30 / +70°C
Dimensions (mm): 26 x 16 x 2
Standards : EN13757-4 : 2005

Versions	Part Nb
RTU	ARF7751AA

868 / 870MHz

► 1000m range - 20mW -117dBm

PRG



Radiated RF Power: 14dBm
Sensitivity: -110dBm (T or S modes) / -117dBm (R mode)
RF data rate: 4.5 kbps (R mode) / 32 kbps (S mode) / 100 kbps (T mode)
Fully certified M-Bus stack with applicative firmware : Mbus modes: R / S / T
16KB of available memory to embedd client application
Power supply: 2 to 3.6V
Power consumption: 35mA (TX) - 25mA (RX) - <0.6µA (Stby)
Operating temperature: -30 / +70°C
Dimensions (mm): 26 x 16 x 2
Standards : EN13757-4 : 2005

Versions	Part Nb
PRG	ARF7751BA

**All TWIMO and Wireless M-Bus modules have compatible footprints*

BLUETOOTH® Modules

2.41 / 2.48GHz

▶ 30m range - 1mW

BTC2-Data



Radiated RF power: 0dBm
Sensitivity: -86dBm
RF data rate: up to 3Mbps EDR
Bluetooth 2.1 stack (Chipset BC04)
Data profiles: SPP - OPP - DUN
Baseband - Link Manager - L2CAP - RFCOMM - SDP - SCO
Power supply: 3 to 3.6V
Power consumption: 50mA (RX) - 50mA (TX)
Operating temperature: -35 / +70°C
Dimensions (mm): 22 x 14 x 3

Versions	Part Nb
Integrated antenna	ARF7678AA
RF Out Pin	ARF7678BA

2.41 / 2.48GHz

▶ 150m range - 100mW

BTC1-Data



Radiated RF power: 20dBm
Sensitivity: -86dBm
RF data rate: up to 3Mbps EDR
Bluetooth 2.1 stack (Chipset BC04)
Data profiles: SPP - OPP - DUN
Baseband - Link Manager - L2CAP - RFCOMM - SDP - SCO
Power supply: 3 to 3.6V
Power consumption: 50mA (RX) - 300mA peak (TX)
Operating temperature: -35 / +70°C
Dimensions (mm): 32 x 14 x 3

Versions	Part Nb
Integrated antenna	ARF7680AA
RF Out Pin	ARF7680BA
U.FL Connector	ARF7681AA

Perform your application in a few minutes

Starter Kits & Software Development Kits



Evaluate ADEUNIS RF products
Perform RF measurements
Develop a prototype

Available for the following modules

- TWIMO RF range
- Wireless M-Bus range
- Bluetooth® range

Versions	Part Nb
TWIMO HP868 Starter Kit	ARF7864AA
TWIMO MP868 Starter Kit	ARF7865AA
TWIMO - Software Development Kit	ARF7689AA
Wireless M-Bus Starter Kit	ARF7863AA
BTC1-Bluetooth® Starter Kit	ARF7861AA
BTC2-Bluetooth® Starter Kit	ARF7862AA

TWIMO Extension board for Starter kit



Versions	Part Nb
TWIMO HP868 Extension Board	ARF7860CA
TWIMO MP868 Extension Board	ARF7860CB
869MHz SMA Articulated antenna	ACC1300AE

WMBus Extension board for Starter kit



Versions	Part Nb
Wireless M-Bus Extension Board	ARF7860BA
869MHz SMA Articulated antenna	ACC1300AE

Bluetooth® Extension board for Starter kit



Versions	Part Nb
BTC1-Bluetooth® Extension Board	ARF7860AA
BTC2-Bluetooth® Extension Board	ARF7860AB
2.4GHz SMA Right angle antenna	ACC1300AD

RF Transceivers

869MHz

► 6000m range - up to 500mW

ARF54



Radiated RF Power: 27dBm
Sensitivity: -103dbm
RF data rate: up to 57.6kbps
Features: Transparent, Addressed, Repeater modes
Power supply: 2.7 to 3.6V
Power consumption: 700mA (TX) / 35mA (RX)
Operating temperature: -30 / +70°C
Dimensions (mm): 41 x 24 x 6

Versions	Part Nb
External antenna	ARF7429A

902 / 928 MHz

► 6000m range - 500mW

ARF54



Radiated RF Power: 27dBm
Sensitivity: -103dbm
RF data rate: up to 57.6kbps
Features: Addressed mode
Power supply: 2.7 to 3.6V
Power consumption: 700mA (TX) / 35mA (RX)
Operating temperature: -30 / +70°C
Dimensions (mm): 41 x 24 x 6

Versions	Part Nb
External antenna	ARF7429B

863 / 870MHz

► 300m range - 8mW

ARF44



Radiated RF Power: 9dBm
Sensitivity: -103dbm
RF data rate: 19.2 kbps
Features: Transparent mode
Power supply: 2.5 to 3.6V
Power consumption: 36mA (TX) / 23mA (RX)
Operating temperature: -30 / +70°C
Dimensions (mm): 27 x 24 x 6

Version	Part Nb
External antenna	ARF7419A

Remote Control

869.525MHz

► 300m range - 2 ways

ARF18



Remote control

Radiated RF Power: 7dBm (6mW)
Modulation: FSK
Operating temperature: -30 / +70°C

OEM receiver

Sensitivity: -104dBm
Power supply: 2.7 / 3.6V
Consumption: 15mA

Numbers ok keys		Part Nb
1 key		ARF7292A
2 keys		ARF7292B
3 keys		ARF7292C
4 keys		ARF7292D

Receiver version		Part Nb
OEM	Outputs: serial interface level, 0/VCC	ARF7294A

Transmitters

869.52MHz

► 400m range - 10mW

ARF19



RF Radiated Power: 10dBm
RF data rate: 1.2 to 2.4 kbps
Power supply: 2.2 to 5V
Power consumption: 15mA
Operating temperature: -20 / +70°C
Dimensions (mm): 25 x 14 x 7

Versions	Part Nb
ASK	ARF7242A
FSK	ARF7242B

869.52MHz

► 4000m range - 500mW

ARF27



RF Radiated Power: 27dBm
RF data rate: 1.2 to 2.4 kbps
Power supply: 2.7 to 5V
Power consumption: 150mA to 600mA
Operating temperature: -20 / +70°C
Dimensions (mm): 24 x 30 x 7

Versions	Part Nb
ASK	ARF7243A

Receivers

869.52MHz

► AM / FM Digital link

ARF19 / 27

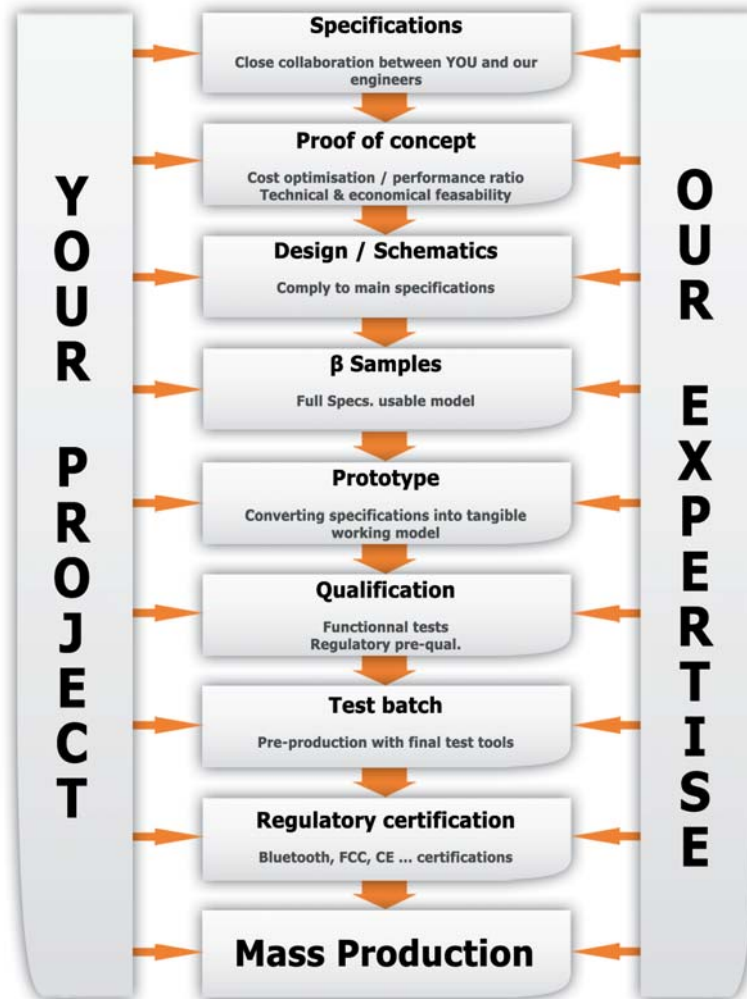


Sensitivity: -113dBm (ASK) / -107dBm (FSK)
RF data rate: 1.2 to 2.4 kbps (ASK) / 1.2 to 9.6 kbps (FSK)
Power supply: 2.2 to 5V
Power consumption: 10mA
Operating temperature: -20 / +70°C
Dimensions (mm): 26 x 15 x 7

Versions	Part Nb
ASK	ARF7245A
FSK	ARF7244A

From idea ... to product ... to market

Short time to market through wireless engineering expertise combined with low-cost production



Typical applications



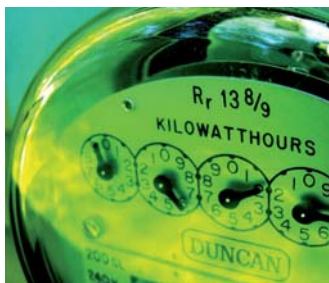
Public & consumer market

Home automation
Access control
Alarm - Security
Technical building management
Clock system management
Medical
Electronic surveillance
...



Industry

Remote control for automation
Measurement & telemetry
Remote management
Traceability
On-board systems
Door remote control
Logistics & storage
...



Energy - Environment

Metering
Gas and oil industries
Water treatment
Photovoltaic
Windmill
...



Long range

Site-to-site communication
Electronic display
Signaling
Agriculture
Transport
...



Note

About ADEUNIS RF



Founded in 1993, Adeunis RF is a privately owned independent company, designing and manufacturing solely Wireless Products. Based in the High Tech Valley near Grenoble and partnered with several research institutes and organizations, we benefit from unique technical expertise.

With an installed base of more than 4 million units and an annual production exceeding 500 000 pieces, we have acquired experience in a myriad of markets and applications requiring wireless connectivity. Our success is not only based on profitability and market share, but on building enduring, long term partnerships with our Customers based on our core values of innovation, quality, compliance and environmental responsibility.

Services & skills

Skills area

- Solutions using Bluetooth, Wifi & Zigbee standards
- Worldwide ISM bands
- Rf solutions from kHz to GHz
- Low consumption products
- Mesh - Addressed - Repeater & Transparent transmission modes

Standard expertise

- Owner of several patents
- Strong worldwide Standards knowledge
- Partnership with European laboratories
- Capability to propose pre/full certifications and European Notifications
- Strict compliance with Standards: EN300-220, EN301-489, EN300-113, EN60950 ...

Your local distributor



283 rue Louis Néel - Parc Technologique Pré Roux
38920 CROLLES - France
Tél. : +33 (0)4 76 92 07 77
Fax : +33 (0)4 76 04 80 87
arf@adeunis-rf.com
www.adeunis-rf.com - www.vokkero.com